

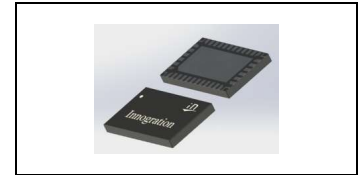


DC-7GHz, 1W, 28V GaN Fully matched PA Module

Description

The GMAH0070-1 is a 1-watt ,single stage integrated Power Amplifier Module, designed for broad band applications, with frequencies from DC to 7GHz. The module is 50 Ω input/output matched and requires minimal external components.

The module implements distributed power amplifier in form of multi chips, housed in cost effective plastic open cavity package, offers a much lower cost than traditional MMIC solutions.



V_{ds}=28V, I_{dq}=10mA, CW

Parameter	30MHz	0.5GHz	1.0GHz	2.0GHz	3.0GHz	4.0GHz	5.0GHz	6.0GHz	6.9GHz	Units
Gain	11.9	12.4	11.9	11.9	12.0	11.4	12.0	12.4	17.9	dB
Psat	2.0	2.5	2.4	2.3	2.0	2.1	2.4	2.0	1.5	W
Gain@Psat	8.9	9.4	8.9	8.9	9.0	8.4	9.0	9.4	14.9	dB
Eff@Psat	42	43	40	38	34	32	35	30	37	%

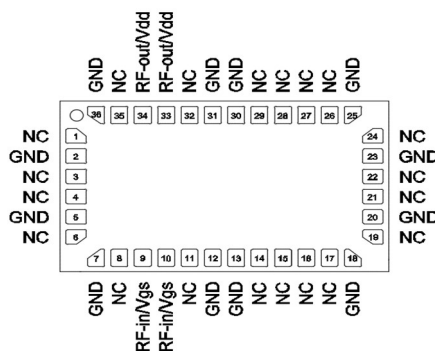
Product Features

- Operating Frequency Range: DC-7GHz
- Operating Drain Voltage: +28 V
- 50 Ω Input/Output
- P3dB: ≥30 dBm
- Small signal gain:>11dB, Power gain:>8dB
- Minimum efficiency:>25%
- 6x10 mm Surface Mount Package
- Compliant to Restriction of Hazardous Substances (RoHS) Directive 2002/95/EC

Applications

- Ultra Broadband Amplifiers
- Fiber Drivers
- Test Instrumentation
- EMC Amplifier Drivers
- 2-way Radios

Pin Configuration and Description



Top View



Pin No.	Symbol	Description
33,34	RFout/Vdd	Transistor 1, Drain Bias & RF Output
9,10	RFIn/Vgs	Transistor 1, RF Input & Gate Bias
Others	NC	No connection
2,5,7,12, 13,18,20,23,25, 30, 31,36 Package Base	GND	DC/RF Ground. Must be soldered to EVB ground plane over array of vias for thermal and RF performance. Solder voids under Pkg Base will result in excessive junction temperatures causing permanent damage.

Rating	Symbol	Value	Unit
Drain--Source Voltage	V_{DS}	150	Vdc
Gate--Source Voltage	V_{GS}	-10 to +2	Vdc
Operating Voltage	V_{DD}	+36	Vdc
Storage Temperature Range	T_{stg}	-65 to +150	°C
Case Operating Temperature	T_c	+150	°C
Operating Junction Temperature	T_j	+225	°C

Table 1. Thermal Characteristics

Characteristic	Symbol	Value	Unit
Thermal Resistance, Junction to Case $T_c=87^\circ\text{C}$, $T_j=175^\circ\text{C}$, DC test	$R_{\theta JC}$	8	°C/W

Table 3. Electrical Characteristics

Parameter	Condition	Min	Typ	Max	Unit
Frequency Range		30		7000	MHz
Power Gain @ Psat		8			dB
P_{SAT}		30			dBm
Drain Efficiency @ P_{SAT}		30			%

Unless otherwise noted: $T_A = 25^\circ\text{C}$, $V_{DD} = 28\text{ V}$, Pulse Width=100 us, Duty cycle=10%

Load Mismatch of per Section (On Test Fixture, 50 ohm system): $V_{DD} = 28\text{ V}$, $I_{DQ} = 10\text{ mA}$, $f = 3.5\text{ GHz}$

VSWR 10:1 at P3dB pulse CW Output Power	No Device Degradation
---	-----------------------

Reference Circuit of Test Fixture Assembly Diagram

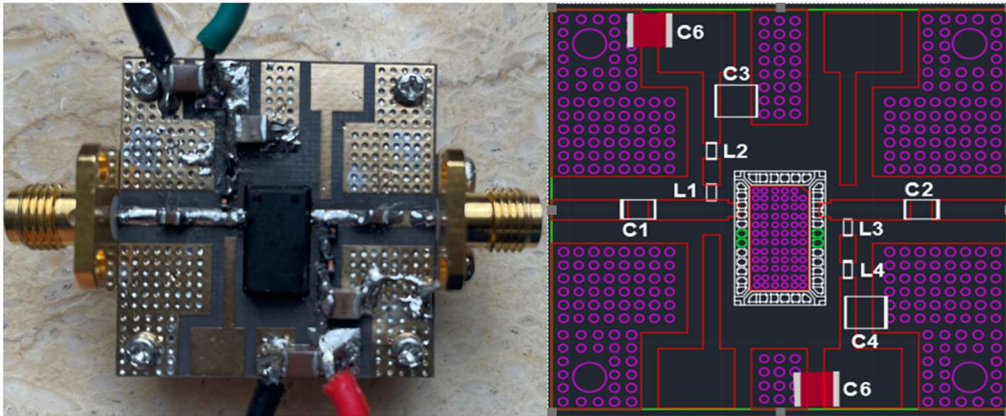


Figure 1. Test Circuit Component Layout

		Part NO. ↵	Vendor ↵
C1, C2 ↵	1uF Chip Capacitor ↵	↵	ATC ↵
C3, C4 ↵	390pF Chip Capacitor ↵	↵	ATC ↵
C5, C6 ↵	10uF 100V chip Capacitor ↵	↵	↵
L1, L3 ↵	100nH 1000mA Inductor ↵	LQW18CNR10K00D ↵	Coilcraft ↵
L2, L5 ↵	470nH 500mA Inductor ↵	LQW18CNR47J00D ↵	Coilcraft ↵
PCB ↵	R05880, 20mil, er=2.2 ↵	↵	MTL ↵

TYPICAL CHARACTERISTICS

Figure 2. Network analyzer output S11/S21 (Pin=0dBm)

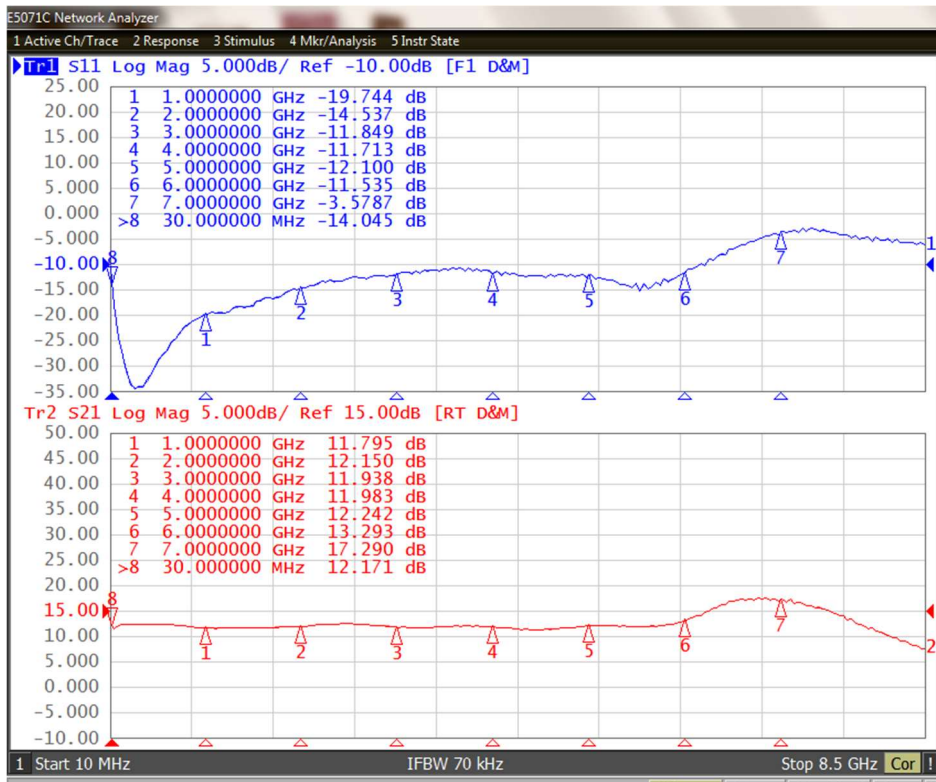
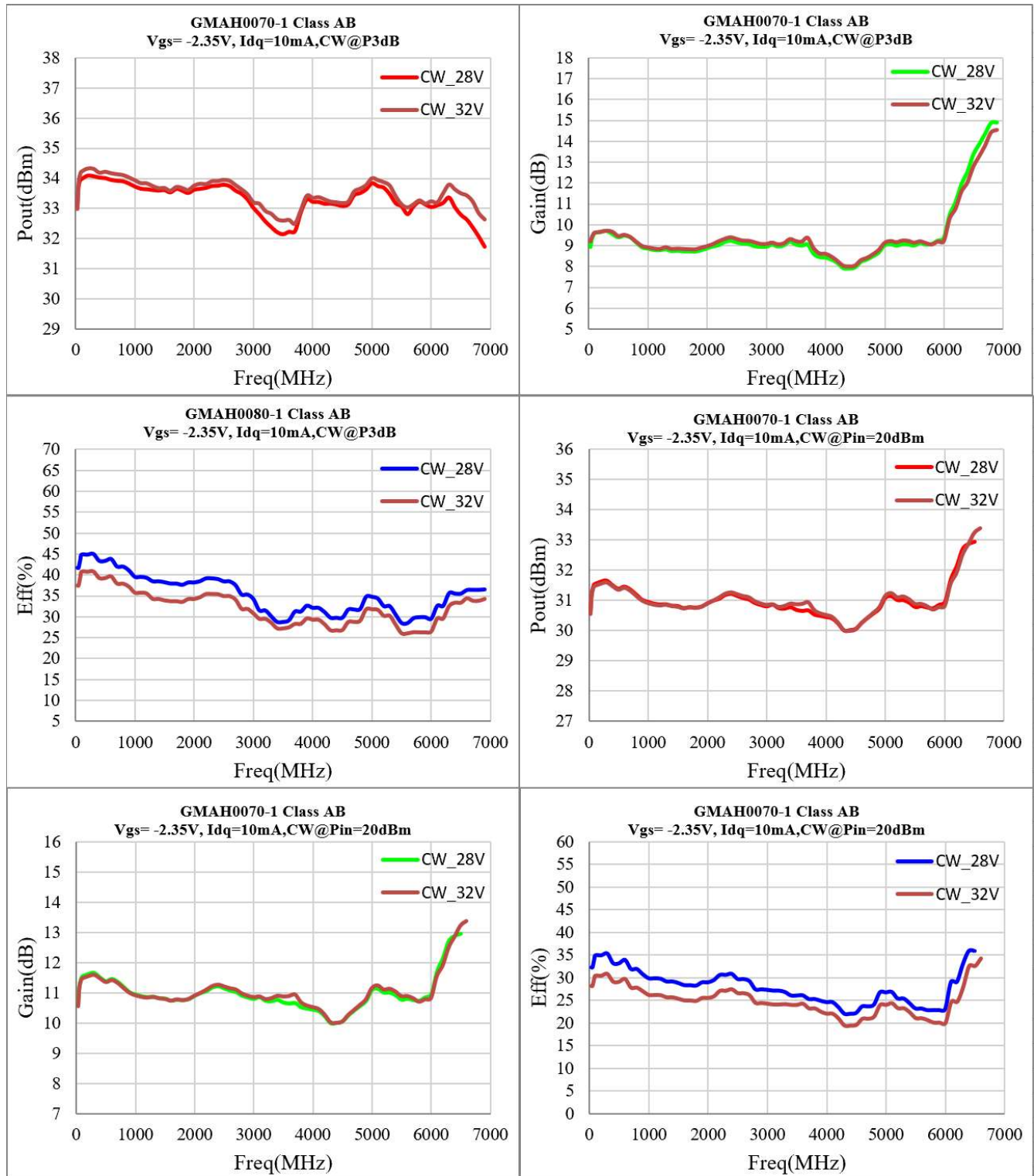


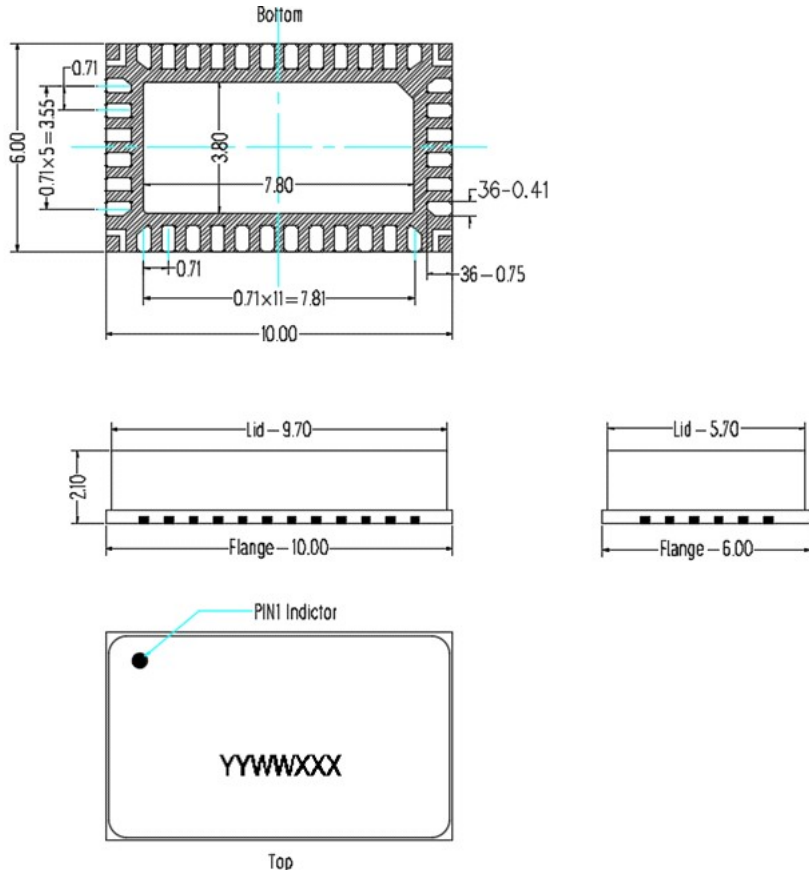


Figure. Psat, Power Gain and, efficiency and Pout @Pin=20dBm vs. Frequency



Package Dimensions

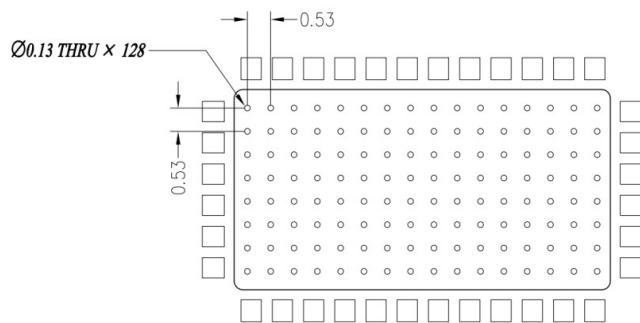
10*6 Plastic Package



Notes:

1. All dimensions are in mm;
2. The tolerances unless specified are ± 0.2 mm.

Mounting Footprint Pattern



Notes:

1. All dimensions are in mm;
2. Vias are required under the backside paddle of this device for proper RF/DC grounding and thermal dissipation. ALL vias are PTH to ground.



Revision history

Table 6. Document revision history

Date	Revision	Datasheet Status
2022/12/9	Rev 1.0	Production Datasheet

Application data based on ZHH-21-12

Disclaimers

Specifications are subject to change without notice. Innogrations believes the information contained within this data sheet to be accurate and reliable. However, no responsibility is assumed by Innogrations for any infringement of patents or other rights of third parties which may result from its use. No license is granted by implication or otherwise under any patent or patent rights of Innogrations . Innogrations makes no warranty, representation or guarantee regarding the suitability of its products for any particular purpose. "Typical" parameters are the average values expected by Innogrations in large quantities and are provided for information purposes only. These values can and do vary in different applications and actual performance can vary over time. All operating parameters should be validated by customer's technical experts for each application. Innogrations products are not designed, intended or authorized for use as components in applications intended for surgical implant into the body or to support or sustain life, in applications in which the failure of the Innogrations product could result in personal injury or death or in applications for planning, construction, maintenance or direct operation of a nuclear facility. For any concerns or questions related to terms or conditions, pls check with Innogrations and authorized distributors

Copyright © by Innogrations (Suzhou) Co.,Ltd.