

700W ,50V L band CW RF Power Transistor

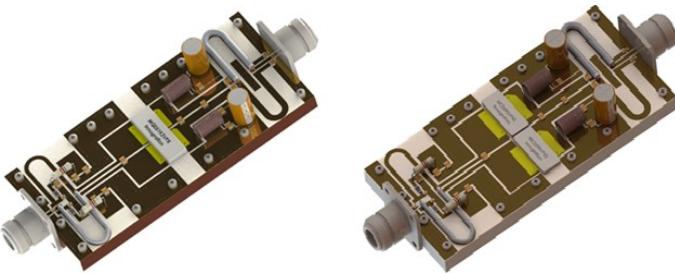
Description

The STCV13700RC2 itself is a 700-watt capable, high performance, internal match, single ended GaN HEMT transistor, idea for RF Energy and ISM application at fixed frequency point or very narrow band within 0.9 to 1.3GHz, typically for 915MHz RF heating or 1.3G particle accelerator applications.

There is no guarantee of performance when this part is used outside of stated frequencies.

It is recommended to use paired STCV13700RC2 to enable >1200W designed for ISM application. Compared to similar power level but in single dual-path packaged device, it offers better thermal management and easier maintenance.

Demonstration of paired STCV13700RC2(right) Vs single dual-path device(left) at 915MHz



- Typical performance(on 1.3GHz narrow band application board with **2×STCV13700RC2** devices soldered)
 $V_{DS}=50V, V_{GS}=-4.5V, CW,$

Freq(MHz)	$P_{out}(W)$	$P_{in}(dBm)$	Gain(dB)	$\eta(\%)$
1300	1300	46.5	15	75

Applications

- 1.3GHz particle linear accelerator
- L band power amplifier
- Avionics application
- 915MHz RF heating

Important Note: Proper Biasing Sequence for GaN HEMT Transistors

Turning the device ON

1. Set VGS to the pinch-off (VP) voltage, typically -5 V
2. Turn on VDS to nominal supply voltage
3. Increase VGS until IDS current is attained
4. Apply RF input power to desired level

Turning the device OFF

1. Turn RF power off
2. Reduce VGS down to VP, typically -5 V
3. Reduce VDS down to 0 V
4. Turn off VGS

Table 1. Maximum Ratings

Rating	Symbol	Value	Unit
Drain--Source Voltage	V_{DSS}	+200	Vdc
Gate--Source Voltage	V_{GS}	-8 to +0.5	Vdc
Operating Voltage	V_{DD}	55	Vdc
Maximum gate current	I_{GS}	100	mA
Storage Temperature Range	T_{stg}	-65 to +150	°C

STCV13700RC2 GaN TRANSISTOR

Document Number: STCV13700RC2
Preliminary Datasheet V1.0

Case Operating Temperature	T_C	+150	°C
Operating Junction Temperature	T_J	+225	°C

Table 2. Thermal Characteristics

Characteristic	Symbol	Value	Unit
Thermal Resistance, Junction to Case by FEA $T_C = 25^\circ\text{C}$, at $P_d = 400\text{W}$ in Paired configurations	$R_{\theta JC}$	0.32	°C /W

Table 3. Electrical Characteristics (TA = 25°C unless otherwise noted)

DC Characteristics (Each path, measured on wafer prior to packaging)

Characteristic	Conditions	Symbol	Min	Typ	Max	Unit
Drain-Source Breakdown Voltage	$V_{GS} = -8\text{V}$; $I_{DS} = 100\text{mA}$	V_{DSS}		200		V
Gate Threshold Voltage	$V_{DS} = 10\text{V}$, $I_D = 100\text{mA}$	$V_{GS(th)}$	-4	-	-2	V
Gate Quiescent Voltage	$V_{DS} = 50\text{V}$, $I_{DS} = 200\text{mA}$, Measured in Functional Test	$V_{GS(Q)}$		-3.2		V

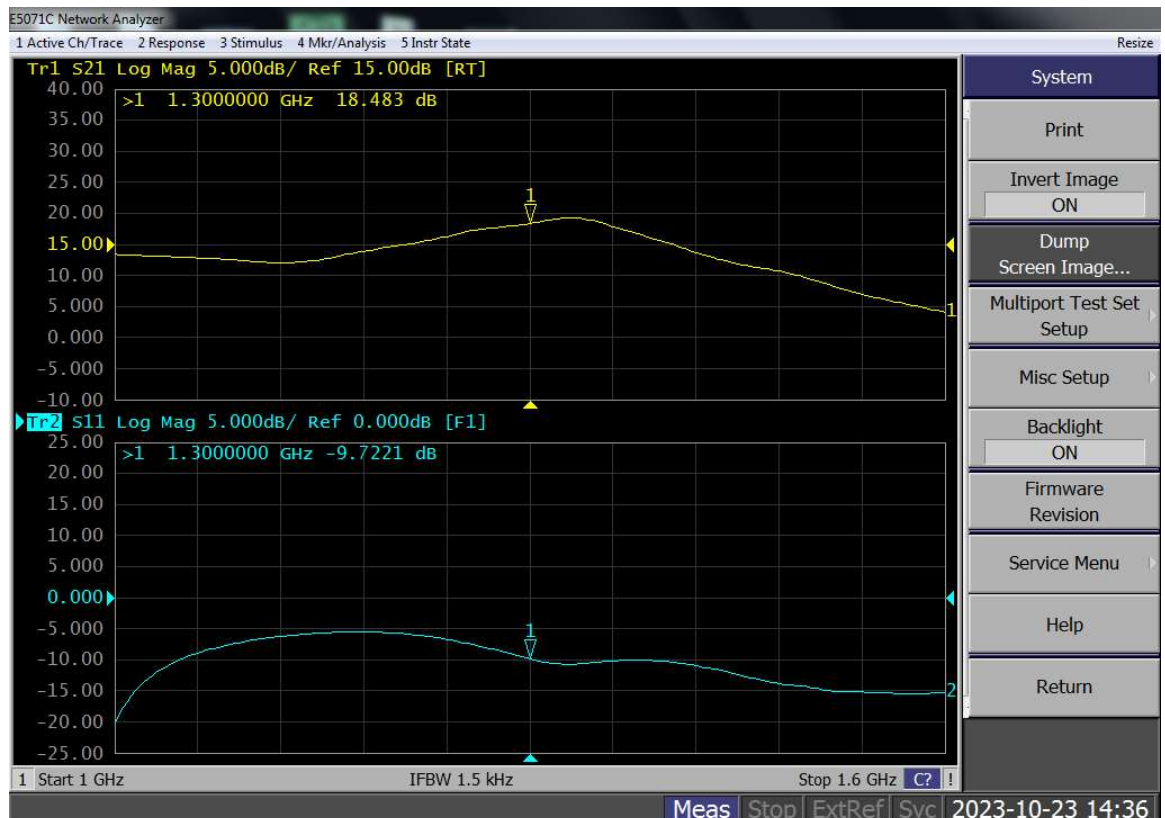
Ruggedness Characteristics in Paired configurations

Characteristic	Conditions	Symbol	Min	Typ	Max	Unit
Load mismatch capability	1.3GHz, $P_{out} = 1300\text{W}$ pulse CW All phase, No device damages	VSWR		5:1		

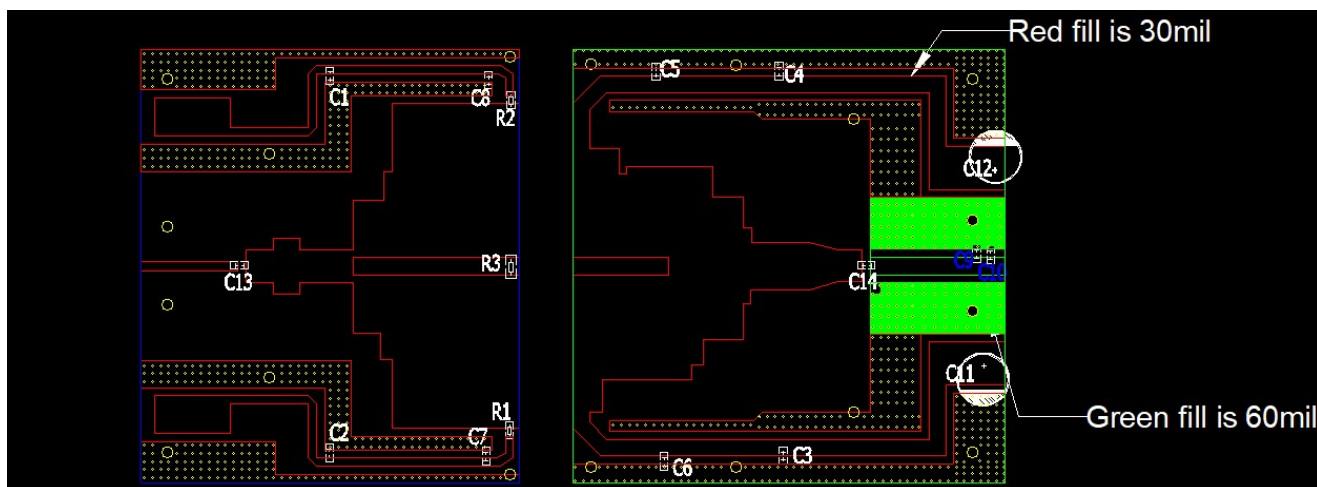
TYPICAL CHARACTERISTICS

STCV13700RC2*2 at 1300MHz

Figure 1: Network analyzer output S11/S21 $V_{ds} = 50\text{V}$, $I_{dq} = 600\text{mA}$, $P_{in} = 0\text{dBm}$



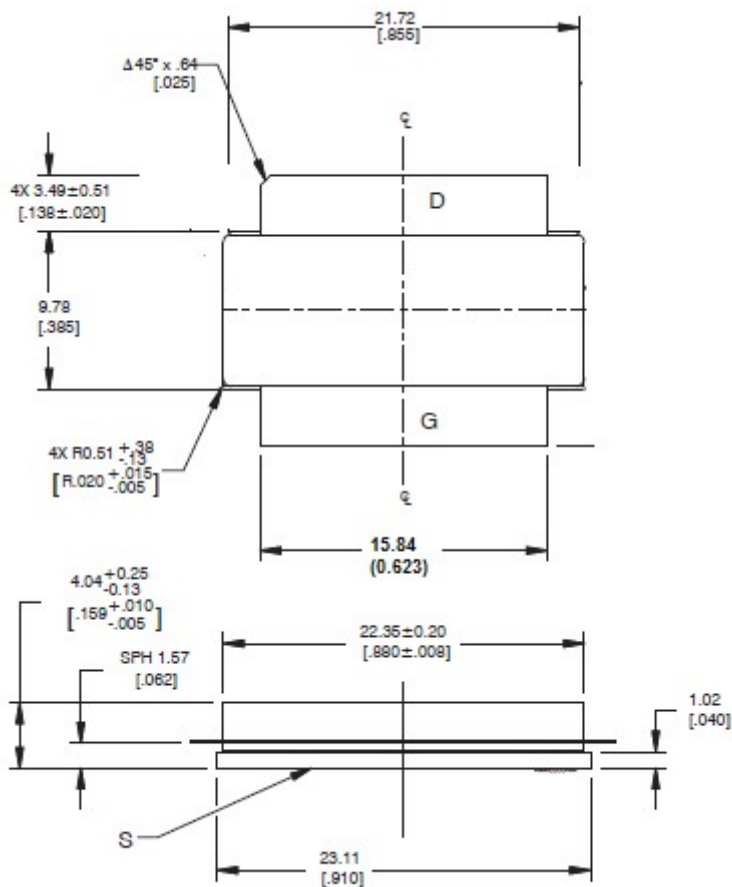
Reference Circuit of Test Fixture




Component	Description	Suggestion
C1~C4	10uF	10uF/100V
C5~C8	68pF	MQ101111
C13	39pF	MQ101111
C14	39pF	MCM-1-300V-D-390J
C11,C12	4700uF/63V	Electrolytic Capacitor
C9	2.2pF	MQ102525
C10	0.5pF	MQ101111
R1,R2	100 Ω	Chip Resistor
R3	10	Chip Resistor
PCB	(Red fill) 30mil Rogers4350	
	(green fill) Taconic RF-35TC-0600-A,thickness 60 mils,1oz copper	

Package Outline

Flangeless ceramic package;



OUTLINE VERSION	REFERENCE			EUROPEAN PROJECTION	ISSUE DATE
	IEC	JEDEC	JEITA		
PKG-C2					09/27/2018

STCV13700RC2 GaN TRANSISTOR

Document Number: STCV13700RC2
Preliminary Datasheet V1.0

Revision history

Table 5. Document revision history

Date	Revision	Datasheet Status
2023/10/23	Rev 1.0	Preliminary datasheet

Application data based on TC-23-68

Disclaimers

Specifications are subject to change without notice. Innogration believes the information contained within this data sheet to be accurate and reliable. However, no responsibility is assumed by Innogration for any infringement of patents or other rights of third parties which may result from its use. No license is granted by implication or otherwise under any patent or patent rights of Innogration. Innogration makes no warranty, representation or guarantee regarding the suitability of its products for any particular purpose. "Typical" parameters are the average values expected by Innogration in large quantities and are provided for information purposes only. These values can and do vary in different applications and actual performance can vary over time. All operating parameters should be validated by customer's technical experts for each application. Innogration products are not designed, intended or authorized for use as components in applications intended for surgical implant into the body or to support or sustain life, in applications in which the failure of the Innogration product could result in personal injury or death or in applications for planning, construction, maintenance or direct operation of a nuclear facility. For any concerns or questions related to terms or conditions, pls check with Innogration and authorized distributors

Copyright © by Innogration (Suzhou) Co.,Ltd.