



50W,50V Plastic RF LDMOS Transistor

ITGV10050C6

Description

The ITGV10050C6 is a 50-watt, highly rugged, LDMOS transistor, designed for any general applications at frequencies up to 1GHz, in 10*6mm QFN plastic package, supporting surface mounted on PCB through high density grounding vias.



- Typical Class AB RF Performance (On Innegration fixture with device soldered).

V_{ds}=50V Idq=160mA

Freq (MHz)	Pulse CW Signal			P _{avg} =35dBm WCDMA Signal		
	Gain P1dB (dB)	P3dB (W)	Eff@P3dB (%)	Gp (dB)	Eff(%)	ACPR _{5M} (dBc)
758	16.86	63.63	63.42	17.70	15.98	-46.16
803	16.93	61.25	64.99	18.04	16.49	-47.08
821	16.72	58.94	64.77	18.02	16.73	-46.99

Features

- High Efficiency and Linear Gain Operations
- Integrated ESD Protection
- Excellent thermal stability, low HCI drift
- Large Positive and Negative Gate/Source Voltage Range for Improved Class C Operation
- Pb-free, RoHS-compliant

Suitable Applications

- P band power amplifier
- All 4G/5G cellular application within 0.5 to 1GHz

Table 1. Maximum Ratings

Rating	Symbol	Value	Unit
Drain--Source Voltage	V _{DSS}	+110	Vdc
Gate--Source Voltage	V _{GS}	-10 to +10	Vdc
Operating Voltage	V _{DD}	+55	Vdc
Storage Temperature Range	T _{stg}	-65 to +150	°C
Case Operating Temperature	T _c	+150	°C
Operating Junction Temperature	T _j	+225	°C

Table 2. Thermal Characteristics

Characteristic	Symbol	Value	Unit
Thermal Resistance, Junction to Case T _c = 85°C, T _j =200°C, DC test	R _{θJC}	1.2	°C/W

Table 3. ESD Protection Characteristics

Test Methodology	Class
Human Body Model (per JESD22--A114)	Class 2



Table 4. Electrical Characteristics (TA = 25 °C unless otherwise noted)

Characteristic	Symbol	Min	Typ	Max	Unit
DC Characteristics					
Drain-Source Voltage V _{GS} =0, I _{DS} =100uA	V _{(BR)DSS}		110		V
Zero Gate Voltage Drain Leakage Current (V _{DS} = 90V, V _{GS} = 0 V)	I _{DSS}	—	—	1	μA
Gate--Source Leakage Current (V _{GS} = 11 V, V _{DS} = 0 V)	I _{GSS}	—	—	1	μA
Gate Threshold Voltage (V _{DS} = 50V, I _D = 600 μA)	V _{GS(th)}	—	2	—	V
Gate Quiescent Voltage (V _{DD} = 50V, I _D = 160mA, Measured in Functional Test)	V _{GS(Q)}	—	3.36	—	V

Load Mismatch (In Innegration Test Fixture, 50 ohm system): V_{DD} = 50Vdc, I_{DQ} = 160mA, f = 1000 MHz

VSWR 10:1 at 50W pulse CW Output Power	No Device Degradation
--	-----------------------

Figure 1: Pin Definition(Top View)



Pin No.	Symbol	Description
8,9,10,11,	Vgs/RF In	Vgs and RF input
32,33,34,35	Vds/RF out	Vds and RF output
2,5,7,12,13,18,20,23,25,30,31,36	GND	DC/RF Ground
Others	NC	No connection
Package Base	GND	DC/RF Ground.

758-821MHz application board

Reference Circuit of Test Fixture Assembly Diagram 20mils RO4350B

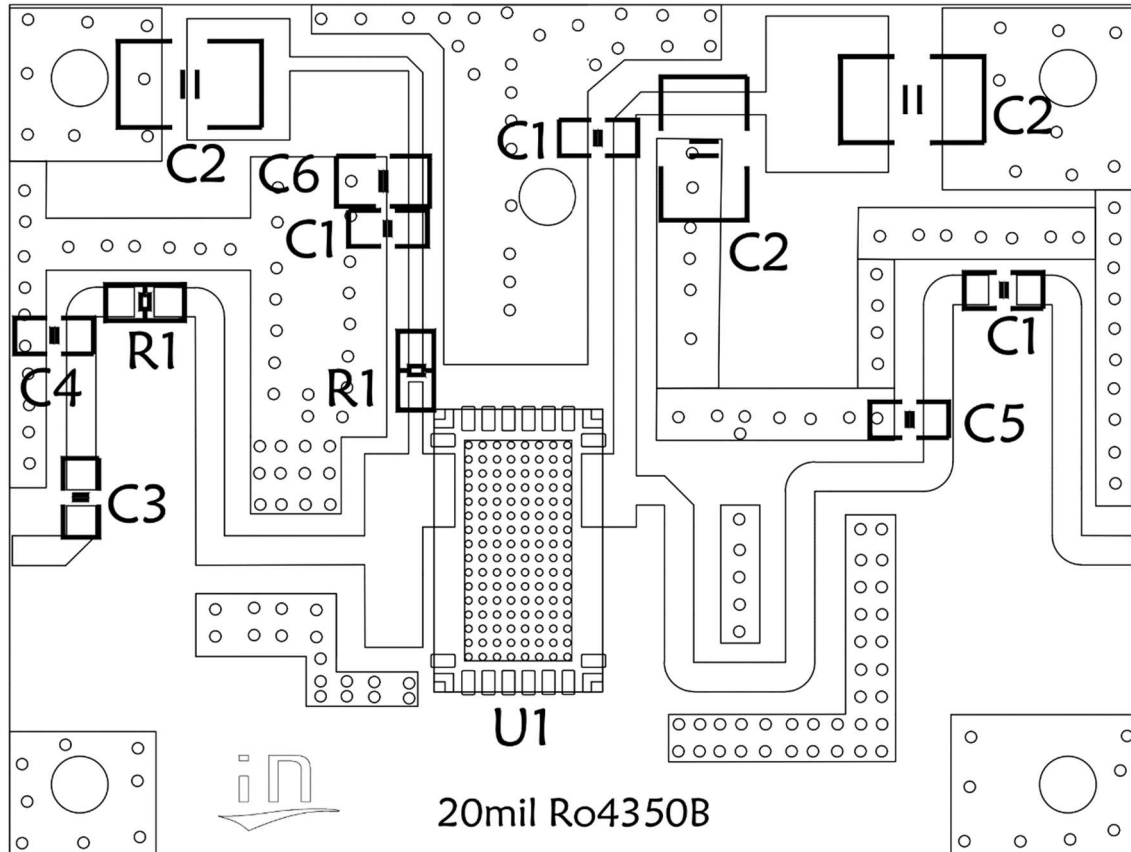


Figure 2. Test Circuit Component Layout

Table 5. Test Circuit Component Designations and Values

Reference	Footprint	Value	Quantity
C1	0805	68pF/250V	3
C2	1210	10uF/100V	3
C3	0805	3.0pF/250V	1
C4	0805	3.9pF/250V	1
C5	0805	3.6pF/250V	1
C6	0805	10uF/16V	1
R1	0603	10R	2
U1	C6	ITGV10050C6	1



TYPICAL CHARACTERISTICS

Figure 5. Power Gain and Drain Efficiency as function of Power Output at Idq=160mA

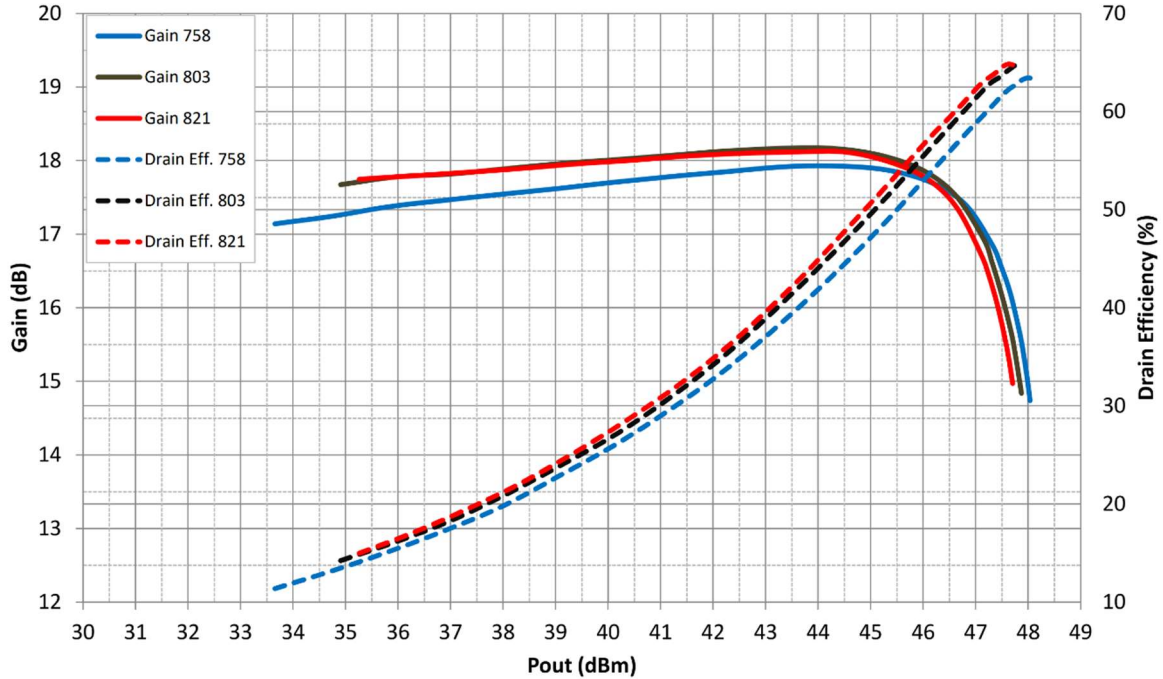
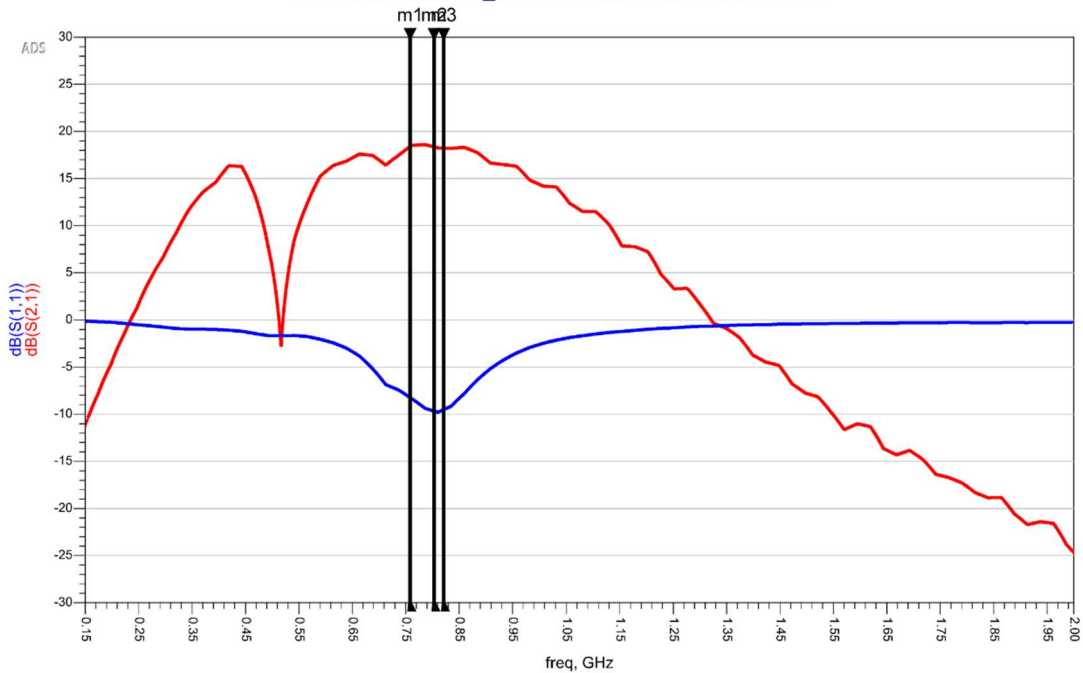


Figure 5. Network analyzer output S11/S21

m1 freq=758.0 MHz dB(S(2,1))=18.375 dB(S(1,1))=-8.229	m2 freq=803.0 MHz dB(S(2,1))=18.356 dB(S(1,1))=-9.667	m3 freq=821.0 MHz dB(S(2,1))=18.226 dB(S(1,1))=-9.517
--	--	--

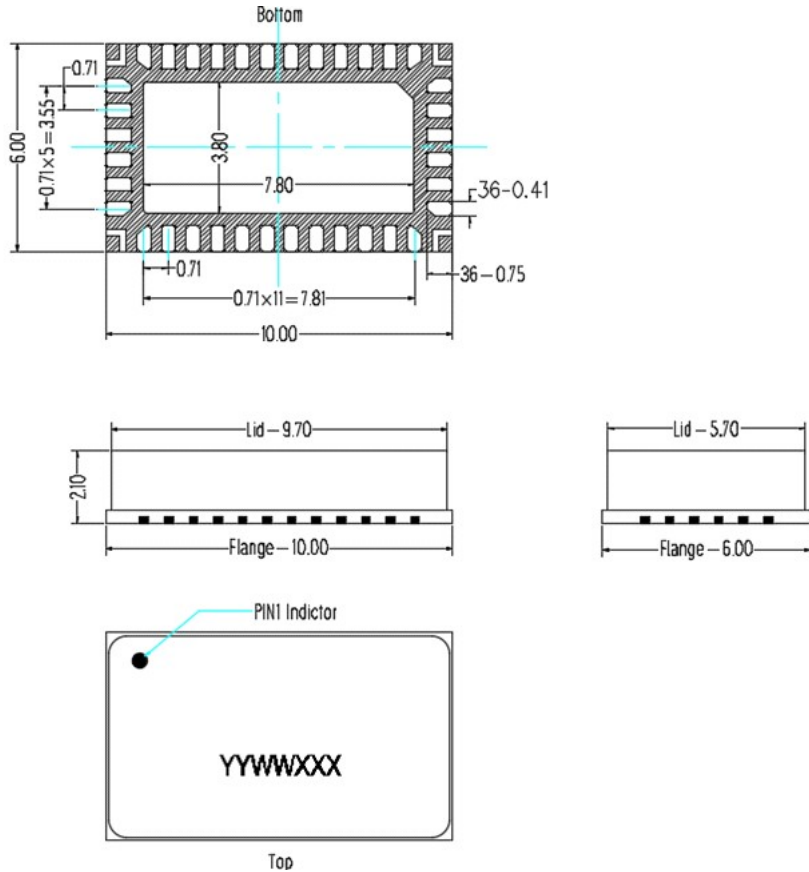
S-Parameters_ITGV10050C6 Class AB





Package Dimensions

10*6 Plastic Package



Notes:

1. All dimensions are in mm;
2. The tolerances unless specified are ±0.2mm.

Revision history

Table 7. Document revision history

Date	Revision	Datasheet Status
2022/1/6	Rev 1.0	Preliminary Datasheet

Application data based on ZBB-23-01

Disclaimers

Specifications are subject to change without notice. Innogrations believes the information contained within this data sheet to be accurate and reliable. However, no responsibility is assumed by Innogrations for any infringement of patents or other rights of third parties which may result from its use. No license is granted by implication or otherwise under any patent or patent rights of Innogrations. Innogrations makes no warranty, representation or guarantee regarding the suitability of its products for any particular purpose. "Typical" parameters are the average values expected by Innogrations in large quantities and are provided for information purposes only. These values can and do vary in different applications and actual performance can vary over time. All operating parameters should be validated by customer's technical experts for each application. Innogrations products are not designed, intended or authorized for use as components in applications intended for surgical implant into the body or to support or sustain life, in applications in which the failure of the Innogrations product could result in personal injury or death or in applications for planning, construction, maintenance or direct operation of a nuclear facility. For any concerns or questions related to terms or conditions, pls check with Innogrations and authorized distributors

Copyright © by Innogrations (Suzhou) Co.,Ltd.