

Product Features

2.7-3.5GHz:>450W, pulsed CW

>50% Drain Efficiency@50V

50ohm in and out, screw down

Device used: STBV35450BY2

Applications

5G Power amplifier

S band communication

ISM

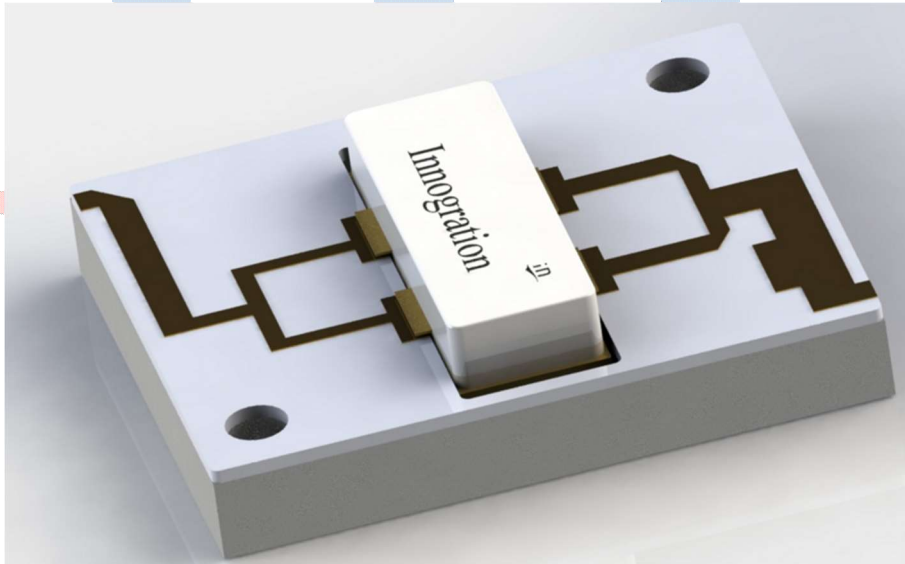
Commercial pulsed CW Power amplifier

Description

The SMPA2735-450V is designed for 5G communication, test and measurement and other ISM applications at 3100-3500MHz. This Amplifier pallet is suitable for use in linear and saturated applications. Featured by 50ohm fully matched at input and output, drop-in placement by screwing it down and 100% RF test, it enables easier power combination to reach higher power with high production yield as part of customer's power amplifier system.

This standard pallet is with typical size 50*90mm, but can be shrunk to much smaller size.

Pallet concept demonstration purpose only, Not exactly the design itself





Electrical Specifications @VCC=50V, T=25°C, 50Ωsystem

PARAMETER	UNIT	MIN	TYP	MAX	SYMBOL
Operating Frequency	MHz	2700	-	3500	fo
Operating Bandwidth	MHz	800		-	OBW
Pulse CW Output Saturated Power	W	450		-	Psat
Power Gain	dB	9	10	-	G _P
Gain Flatness	dB	-	-	±0.7	G _F
Input Return Loss	dB	-	-	-10	S ₁₁
Operating Voltage	V	-	50	55	V _{DS}
Quiescent Current	mA	-	100	-	I _{DQ}
Efficiency@Psat	%	53		-	Eff

Environmental Characteristics

PARAMETER	UNIT	MIN	TYP	MAX	SYMBOL
Operating Case Temperature	°C	-40	-	60	Ta
Storage Temperature	°C	-40		100	Tstg
Relative humidity w/o condensation	%	-	-	95	RH

Mechanical Specifications

PARAMETER	UNIT	VALUE
Dimensions(L × W × H)	mm	50×90×4
RF Input Connector	-	N/A
RF Output Connector	-	N/A
Cooling	-	External Heat-sink

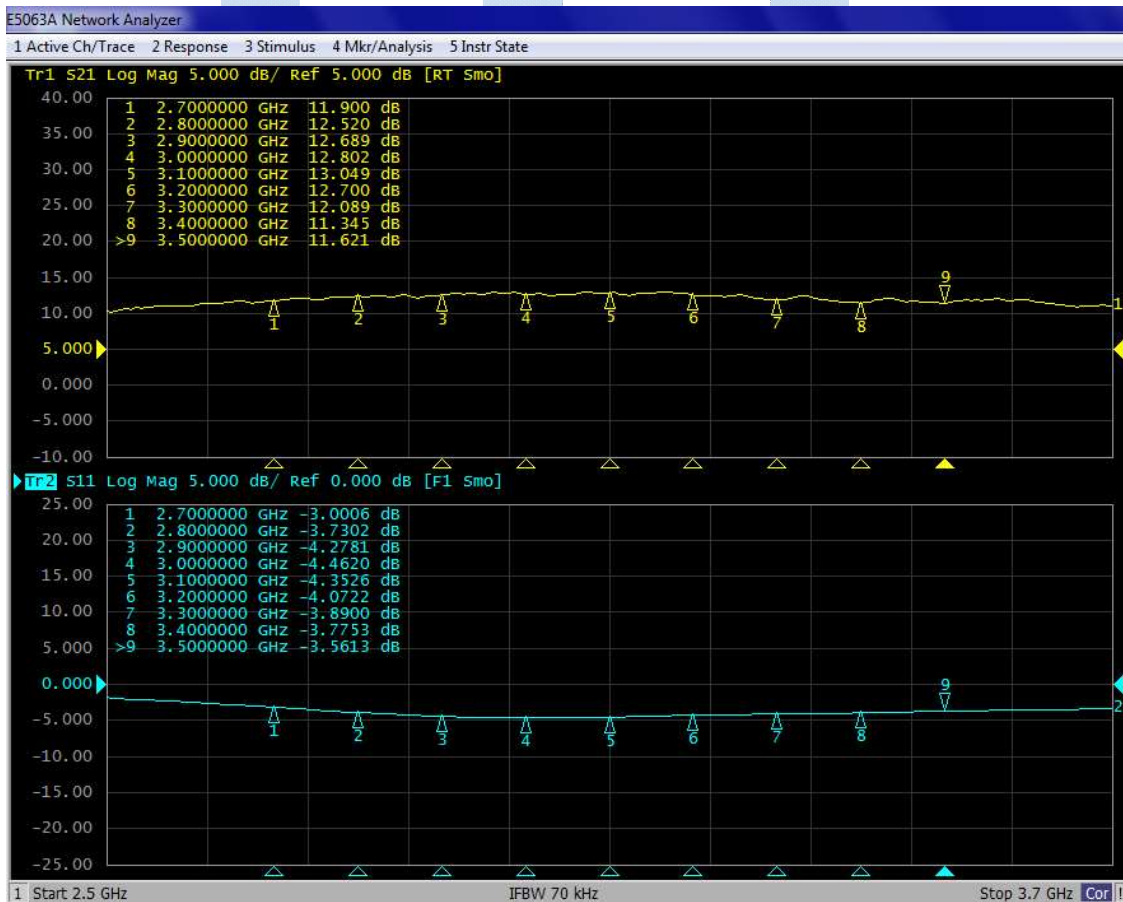


Typical performance

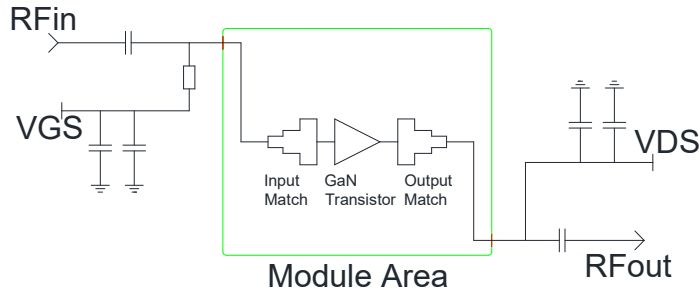
Pulsed CW performance:

STBV35450BY2 V0 Vds=50V,Vgs=-3.43V,Idq=100mA Pulse:100us,10%							
Freq (MHz)	P1dB (dBm)	P1dB (W)	P1dB Eff(%)	P1dB Gain(dB)	P3dB (dBm)	P3dB (W)	P3dB Eff(%)
2700	56.50	447.0	54.1	11.3	57.58	573.0	58.9
2800	56.59	456.5	55.5	12.1	57.86	611.4	61.0
2900	56.24	420.7	53.3	12.4	57.67	585.1	59.3
3000	56.02	400.1	52.2	11.5	57.58	573.0	59.2
3100	56.33	429.3	59.1	11.7	57.83	606.8	66.5
3200	55.32	340.3	51.0	11.2	56.87	486.3	57.1
3300	55.26	335.8	48.6	11.8	56.78	476.8	53.5
3400	55.69	370.8	50.5	12.3	57.24	529.9	56.0
3500	55.34	342.0	51.1	12.5	56.95	495.6	57.3

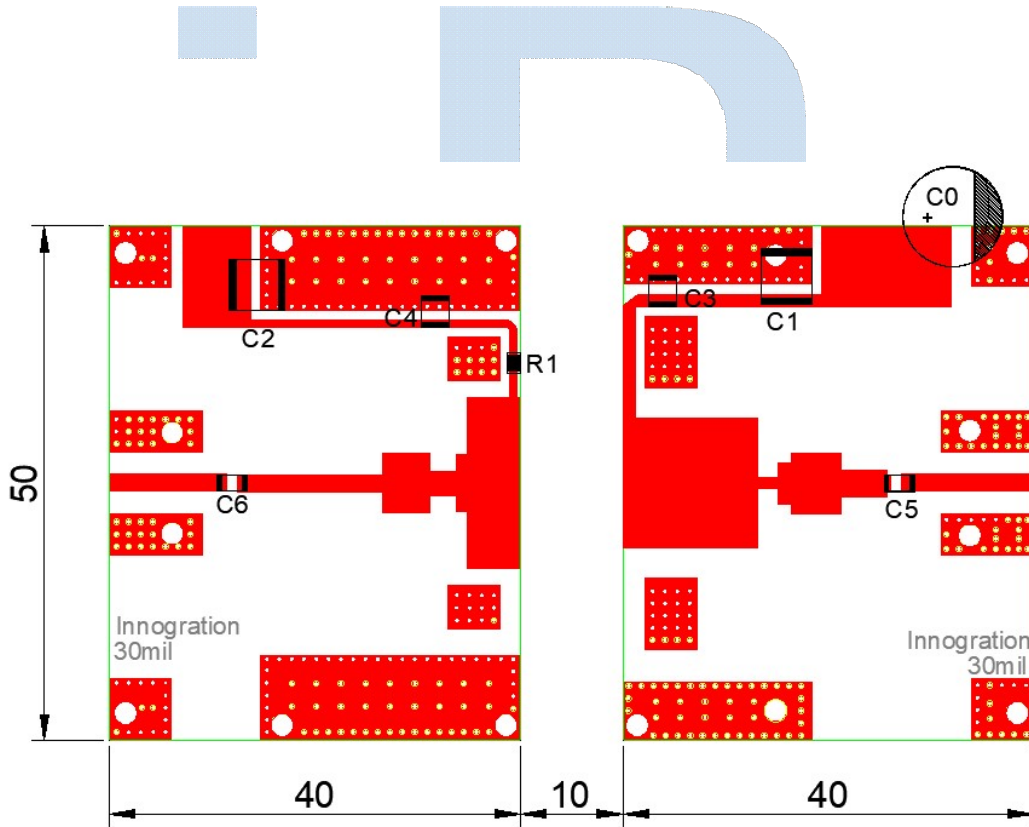
S21/S11 from network analyzer VDS=50V VGS=-3.02V IDQ=500mA



Evaluation board Block Diagram



Evaluation board outline (DUT:STBV35450BY2)



Component	Description	Suggestion
C0	470uF/63V	
C1,C2	10uF	5750
C3,C4,C5,C6	10pF	MQ301111
R1	Chip Resistor,10Ω	0805
PCB	30 Mil Rogers 4350B	



Revision History

Document revision history

Date	Revision	Datasheet Status
2023/7/14	Rev 1.0	Preliminary Datasheet

Application data based on RXT-23-25



Disclaimers

Specifications are subject to change without notice. Innogrations believes the information contained within this data sheet to be accurate and reliable. However, no responsibility is assumed by Innogrations for any infringement of patents or other rights of third parties which may result from its use. No license is granted by implication or otherwise under any patent or patent rights of Innogrations . Innogrations makes no warranty, representation or guarantee regarding the suitability of its products for any particular purpose. "Typical" parameters are the average values expected by Innogrations in large quantities and are provided for information purposes only. These values can and do vary in different applications and actual performance can vary over time. All operating parameters should be validated by customer's technical experts for each application. Innogrations products are not designed, intended or authorized for use as components in applications intended for surgical implant into the body or to support or sustain life, in applications in which the failure of the Innogrations product could result in personal injury or death or in applications for planning, construction, maintenance or direct operation of a nuclear facility. For any concerns or questions related to terms or conditions, pls check with Innogrations and authorized distributors

Copyright © by Innogrations (Suzhou) Co.,Ltd.