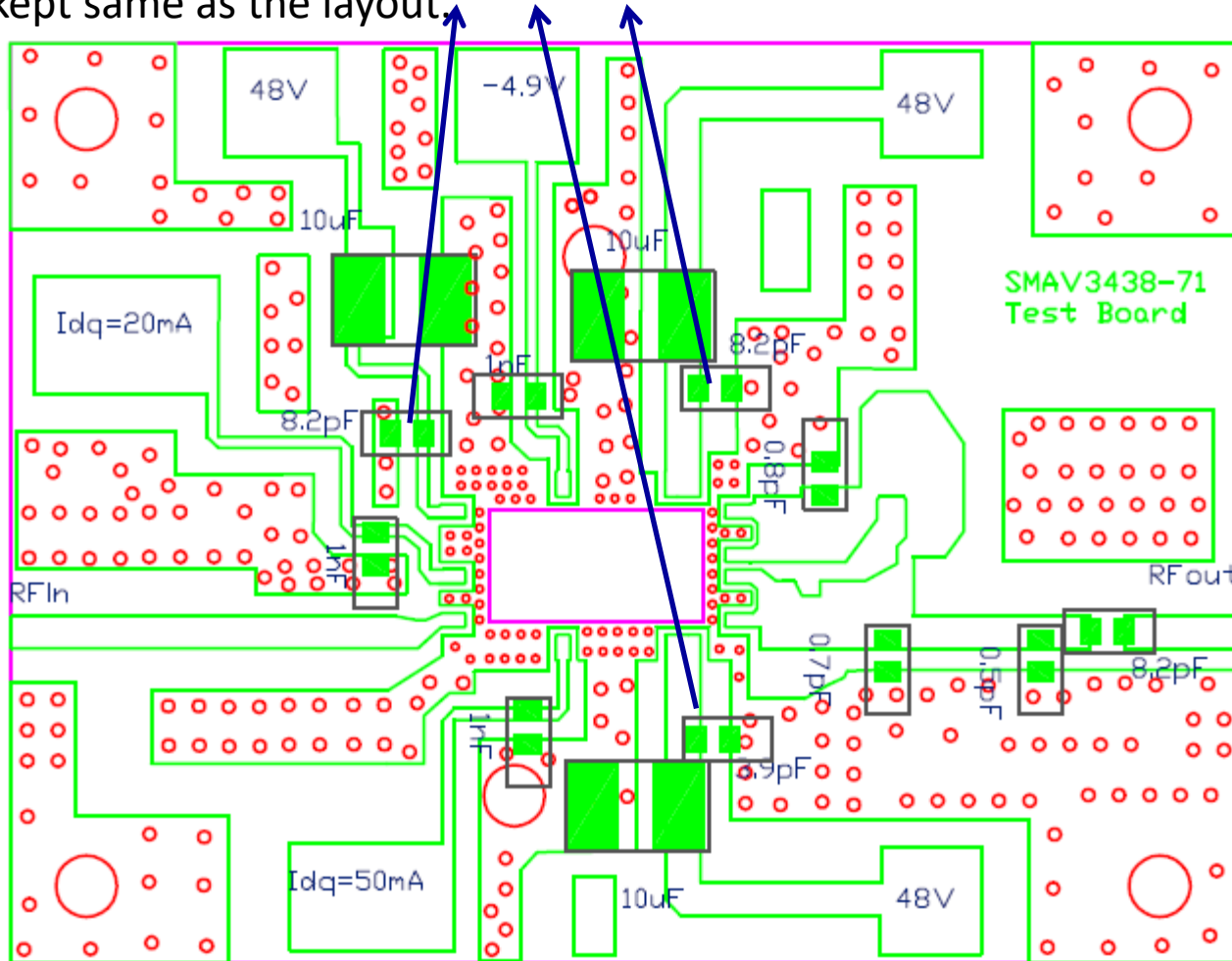


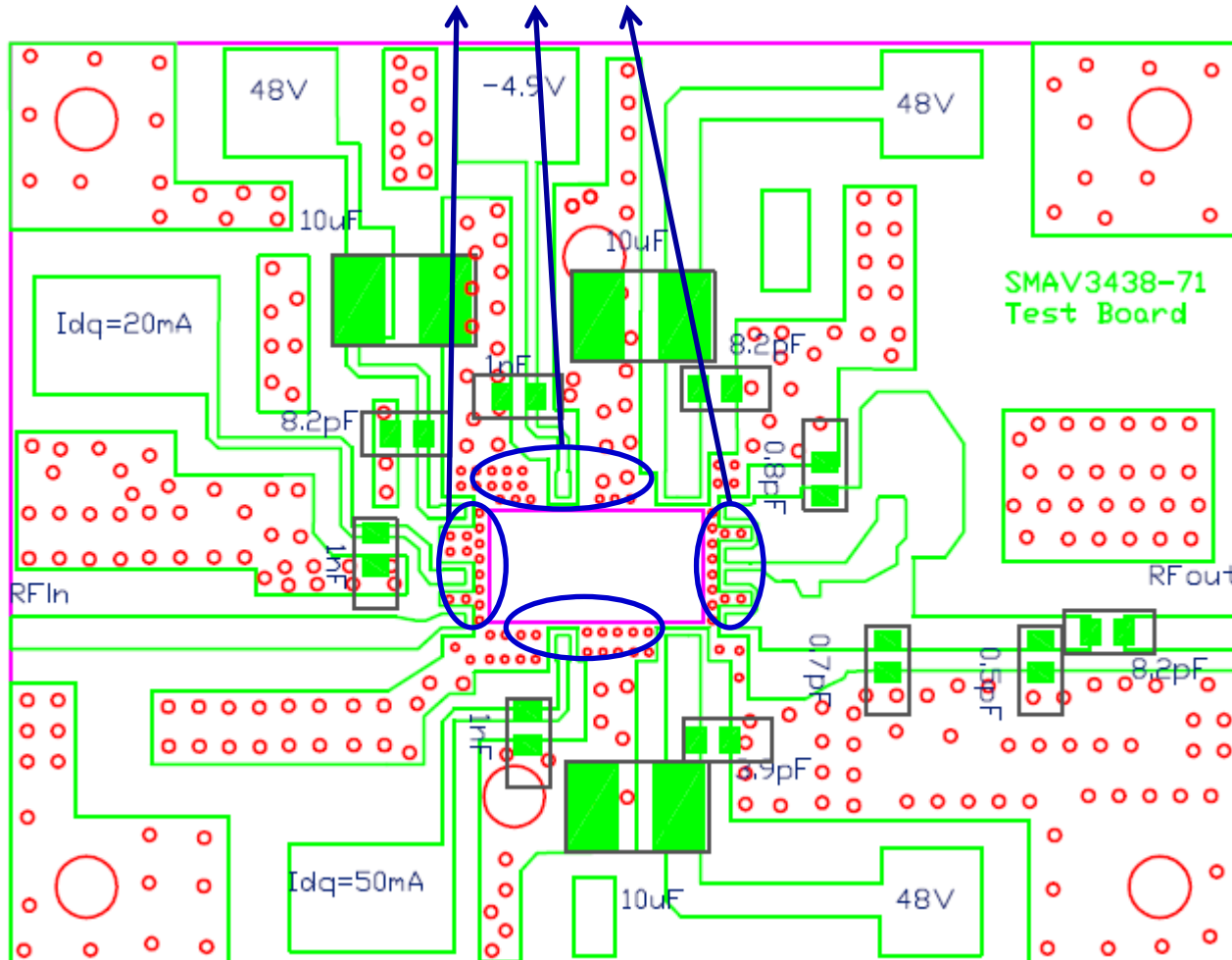
# SMAV3438-71 layout Instruction

1.

Besides the output matching. The 3 RF decoupling capacitors' value and positions are also need to be kept same as the BOM. The 3 bias line width are kept same as the layout.



2. If the coin is used. The ground vias around the coin are needed. It is important. And it is better to connect all the GND/NC pins to the ground outside.



3. Ground vias should be placed on the ground pad as near as possible where the SMT components are connected. As shown in below picture, the left one is not good, the right one is good.

**X**  
NO ground vias are on the ground pad in red circle area . SMD capacitors are too far from other ground vias

**✓**  
Ground vias are added on the ground pad near to the SMT capacitors

