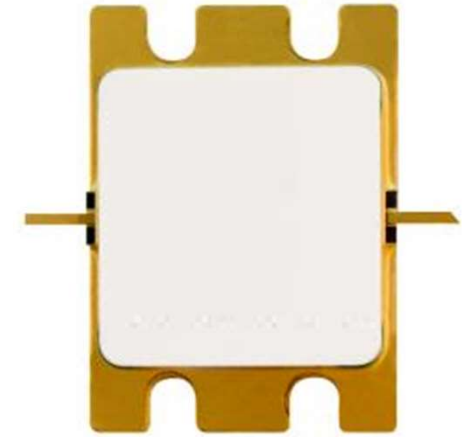
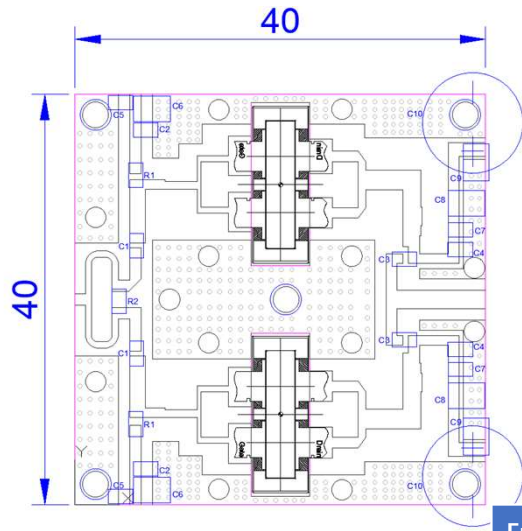


2\*NL7507HS(Left) :40\*40mm ,with similar size and RF performance, like standard IMFET Package(Right, 30.8\*27.4mm), both as user-friendly 50ohm solutions



CW, Vds=32V

Freq(MHz)	Pin(dBm)	PoutdBm)	Pout(W)	IDS(A)	Gain(dB)	Eff(%)
6400	45.8	52.42	174.58	11.7	6.62	46.63
6500	44.79	52.97	198.15	12.9	8.18	48.00
6600	44.89	52.84	192.31	13.2	7.95	45.53
6700	44.79	52.52	178.65	12.9	7.73	43.28
6800	43.99	53.4	218.78	14.9	9.41	45.88
6900	44.55	52.99	199.07	13.25	8.44	46.95
7000	43.7	52.78	189.67	13.2	9.08	44.90
7100	44.31	53.23	210.38	14.3	8.92	45.97
7200	44.25	52.13	163.31	11.5	7.88	44.38